

G&G ARMAMENT
AIRSOFT GUNS & ACCESSORIES

GR14 SERIES

6mm Electric Semi /
Full Auto System

Instruction Manual

100% Made in Taiwan www.guay2.com
Manufactured by G&G ARMAMENT

Address

Taipei / 11F-3, NO.27, Lane 169, Kangning St, Shijr City, Taipei County 22180, TAIWAN
Changhua / No. 999, Zhonghua Rd., Shengang Township, Changhua County 50952, Taiwan

E-Mail

Sales Department / sales@guay2.com
b2b@guay2.com

Technology support Department / support@guay2.com

Website

www.guay2.com

Tel

Taipei / 886-2-2692-2000
Changhua / 886-4-798-9000

Fax

Taipei / 886-2-2692-4000
Changhua / 886-4-798-9900



G&G ARMAMENT
AIRSOFT GUNS & ACCESSORIES

GR14 SERIES

6mm Electric Semi /
Full Auto System

Instruction Manual

100% Made in Taiwan www.guay2.com
Manufactured by G&G ARMAMENT

GR14 SERIES

6mm Electric Semi / Full Auto System

Instruction Manual

WARNING

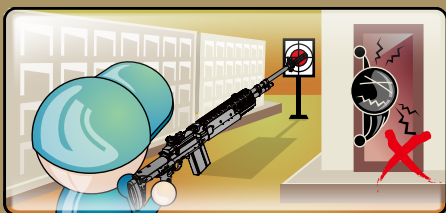


Adult supervision required. Always wear safety goggles when using this product. Misuse or careless handling of this product may cause injury. May be hazardous up to 50 meters.



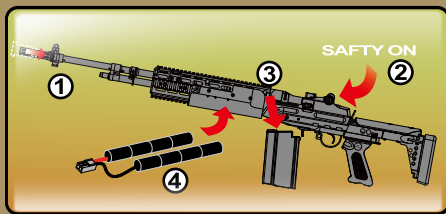
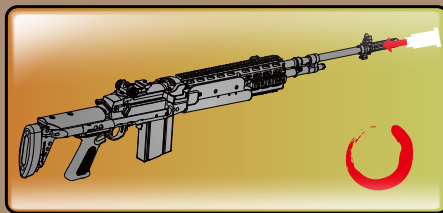
Never direct the muzzle towards a person, animal or in any direction. That may cause harm or damage to the third party.

You may be liable for damaging public or personal property or for injuring a person or an animal even if you only meant to shoot as a "practical joke." Always observe good manners and enjoy fun sport shooting.



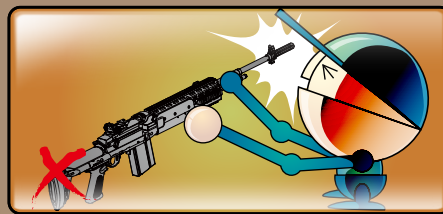
Make sure to put the barrel and safety cap on the muzzle, except when you are shooting. Do this to prevent accident, discharge of BBs and also for dust protection purpose. Never pull the trigger while the barrel and the safety cap is attached.

Select a safe place for operating the air gun, avoid places where people and cars are around.



Looking into the muzzle is extremely dangerous regardless of BBs having been loaded or not. If you get hit in the eye by a BB pellet, you may in worst case, lose your eye sight.

Safety procedures:
1. Attach the safety cap to the muzzle.
2. Set the selector lever to the safety position.
3. Remove the magazine.
4. Remove the battery.



WWW.GUAY2.COM

WARNING

This product is intended for users 18 years or older. Read all instructions before using this product. The buyer and the user of this product shall adhere to all local laws regulating the usage and the ownership of airsoft guns.

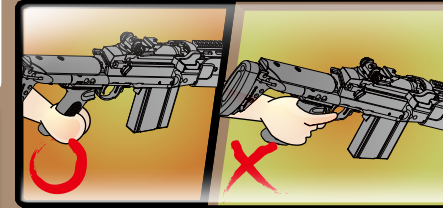


G&G ARMAMENT
AIRSOFT GUNS & ACCESSORIES



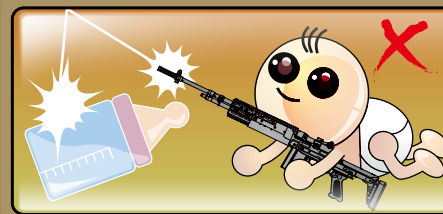
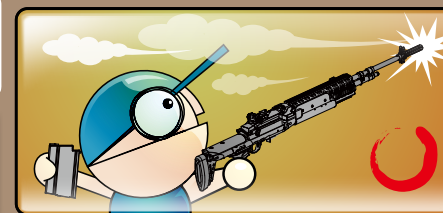
Activating the trigger carelessly is extremely dangerous. Never put your finger on the trigger unless the safety cap is removed and you are ready to shoot a target.

When you carry the air gun, attach the safety cap, set the selector lever to the safety position and always put the air gun in a case or bag.



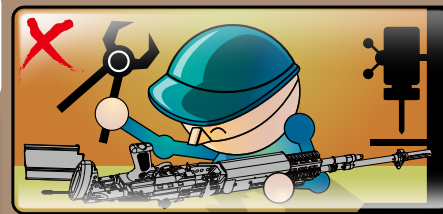
There may be cases where some BBs remain in the gun after the magazine has been removed. After removal of the magazine, direct the muzzle towards a safe direction and pull the trigger to confirm that there are no BBs remain in the gun, then attach the safety cap.

When shooting the air guns for target practice or in a game situation, you and all participants must wear safety goggles or other eye protective gear. Also, pay attention to ricochets. It is very important to pay attention to third parties other than the participants.



Disassembling or modifying the gun may adversely affect the performance and make it dangerous. "It may be against the Law."

Always attach the safety cap to the muzzle, remove the battery and store the air gun in a case or bag and at a place that is out of reach by children.



WWW.GUAY2.COM

GR14 SERIES

6mm Electric Semi / Full Auto System

Instruction Manual



G&G ARMAMENT
AIRSOFT GUNS & ACCESSORIES

3

CONTENTS

- Page 1~2** WARNING
- Page 3** CONTENTS
- Page 4** GR14 SERIES LINE
- Page 5~6** COMPONENTS
- Page 7** SELECTOR & SAFETY SETTING
- Page 8** BATTERY SETTING
- Page 9** SETTING THE MAGAZINE
- Page 10** REAR SIGHT ADJUSTMENT
- Page 11** COLLAPSIBLE STOCK
- Page 11** ADJUSTABLE CHEEK REST
- Page 12** BOLT HANDLE
- Page 12** HOP-UP ADJUSTMENT
- Page 13~14** FIRING
- Page 15~16** TROUBLE SHOOTING
- Page 17~22** PARTS LIST

WWW.GUAY2.COM

WWW.GUAY2.COM

GR14 Series Line



GR14 E.B.R. Long Ver.



GR14 E.B.R. Short Ver.



S.O.C.16



GR14 Veteran



GR14 Black Stock



GR14 Imitation Wood Stock



GR14 Walnut Wood Stock



Rifle Type 57 R.O.C.
Imitation Wood Stock



Rifle Type 57 R.O.C.
Walnut Wood Stock

4

COMPONENTS

No.	Component Name
1	FLASH SUPPRESSOR
2	FRONT SIGHT
3	BARREL
4	SLING ATTACHMENT (FORESIGHT MOUNT)
5	RAIL, UPPER PART
6	BOLT CATCH
7	REAR SIGHT
8	SLING ATTACHMENT (REARSIGHT MOUNT)
9	MAGAZINE
10	MAGAZINE CATCH
11	SAFETY
12	ADJUSTABLE CHEEK REST
13	ELEVATION ADJUSTMENT KNOB
14	WINDAGE ADJUSTMENT KNOB

GR14 E.B.R. Long Ver.

GR14 E.B.R. Short Ver.



GR14 Walnut Wood Stock

GR14 Imitation Wood Stock

GR14 Veteran

Rifle Type 57 R.O.C. Walnut Wood Stock

Rifle Type 57 R.O.C. Imitation Wood Stock

GR14 Black Stock

S.O.C.16



COMPONENTS

No.	Component Name
15	BOLT
16	BUTT PLATE
17	CHEEK REST WRENCH
18	GRIP
19	TRIGGER
20	TRIGGER GUARD
21	SELECTOR LEVER
22	BOLT HANDLE
23	HANDGUARD
24	RAIL, LOWER PART
25	SLING SWIVEL (FRONT)
26	SLING SWIVEL (REAR)
27	PROTECTIVE CAP
28	CLEANING ROD

GR14 SERIES

6mm Electric Semi / Full Auto System

Instruction Manual

SELECTION & SAFETY SETTING

SAFETY SETTING MODE

The trigger can not be pulled.

SEMI MODE (SINGLE SHOT)

Press and turn the selector to "V" position. The gun will only fire one shot each time.

FULLY AUTOMATIC MODE (AUTOMATIC FIRING)

Press and turn clockwise 180 degrees to "A" position. The gun will fire automatically.



SAFETY SETTING MODE



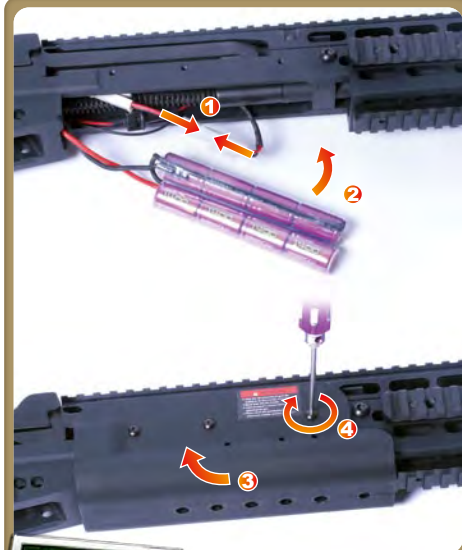
SEMI MODE



FULLY AUTOMATIC MODE



STEP 1



STEP 2

for EBR



STEP 2

for all series (Except EBR)

BATTERY SETTING

STEP 1

Set to safety mode.

STEP 2 (for EBR)

Connect the connector.

Insert the battery to the battery holder.

Set the handguard upward then tighten the screws.

STEP 2 (for all series, except EBR)

Connect the connector.

Insert the battery to the stock.

Close the battery cover and butt plate.

GR14 SERIES

6mm Electric Semi / Full Auto System

Instruction Manual

SETTING THE MAGAZINE

STEP 1

Press the magazine release to remove the magazine.

STEP 2

Open the cover of magazine.

Load G&G 5.95mm BB pellets into the magazine.

STEP 3

Close the cover and tighten the gear on the bottom.

STEP 4

Set the magazine upward.

Insert the magazine into the body.

STEP 5

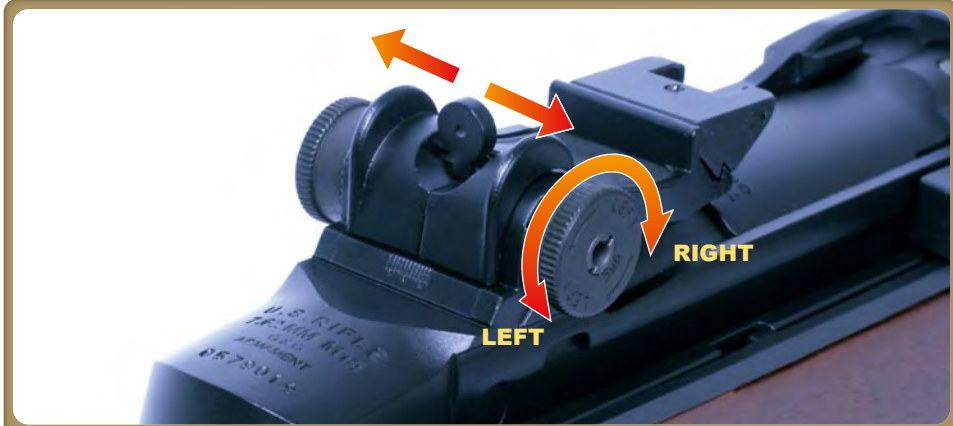
Connect firmly till a click sound is heard.

WWW.GUAY2.COM

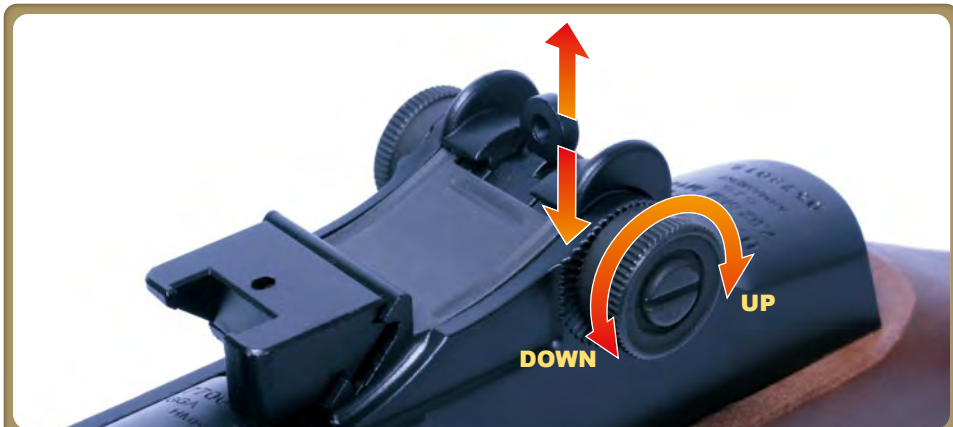


CAUTION

Always use the G&G BB pellet diameter 5.94 ~ 5.96mm BBs for this air gun. We shall not be held responsible for any damage or accidents arising from the use of pellets supplied by other manufacturers.



WINDAGE ADJUSTMENT KNOB



ELEVATION ADJUSTMENT KNOB

REAR SIGHT ADJUSTMENT

WINDAGE ADJUSTMENT KNOB

Turning clockwise : To correct the shots leaning to the left.
Turning counter-clockwise: To correct the shots leaning to the right.

ELEVATION ADJUSTMENT KNOB

Turning clockwise : To correct high shots.
Turning counter-clockwise: To correct low shots.

WWW.GUAY2.COM

GR14 SERIES

6mm Electric Semi / Full Auto System

Instruction Manual

COLLAPSIBLE STOCK

STEP 1

Press the stock release button with thumb.

STEP 2

Pull the stock backward to adjust length until hear a click sound. (6 position)

ADJUSTABLE CHEEK REST

STEP 1

Open the wrench to unlock cheek rest.

STEP 2

Using the tip of screwdriver and press the cheek rest plunger. Adjusting the cheek rest height. (9 position)

STEP 3

Lock the wrench.

WWW.GUAY2.COM

COLLAPSIBLE STOCK



STEP 1



STEP 2

ADJUSTABLE CHEEK REST



STEP 1



STEP 3



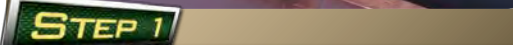
STEP 2

BOLT HANDLE



STEP 1

RIGHT SIDE



LEFT SIDE

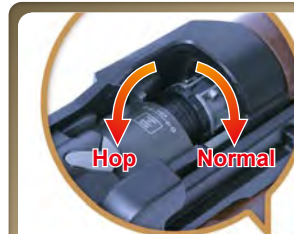
CAUTION

Be careful not to catch your fingers in the dummy bolt.



STEP 2

HOP-UP ADJUSTMENT



WARNING

Never hold the gun sideways as the BB pellets will curve right or left. This is due to the HOP-UP system.

Too much HOP-UP. (Return the lever toward NORMAL.)

Not enough HOP-UP. (Move the lever toward HOP.)
Or too much HOP-UP. (Return the lever toward NORMAL.)



STEP 2



G&G ARMAMENT
AIRSOFT GUNS & ACCESSORIES

BOLT HANDLE

STEP 1

Pulling the bolt handle backward then push the bolt catch. Bolt can be fastened rearward.

STEP 2

Pulling the bolt handle backward again to release the bolt.

HOP-UP ADJUSTMENT

STEP 1

Fasten the bolt rearward.

STEP 2

Turning hop-up dial for adjusting the ideal flight pattern of the BB pellet. The hop-up dial can only be turned a certain amount. Turning too much will damage the unit.

WWW.GUAY2.COM

GR14 SERIES

6mm Electric Semi / Full Auto System

Instruction Manual

FIRING

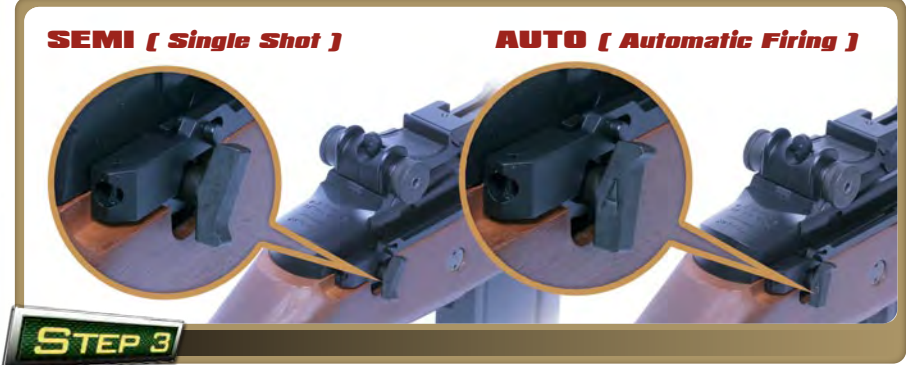
STEP 1
Make sure insert the magazine upwards and into the body. When it is properly inserted you will hear a click sound.

STEP 2
Remove the protective cap only when you are ready for firing the gun.

STEP 3
Set the selector lever to "SEMI - V" or "AUTO - A" position.

STEP 4
Push the safety to unlock trigger then pull the trigger to fire.

CAUTION
There are possible cases that no firing occurs after pulling the trigger in the semi auto mode. In such cases, do not pull the trigger furiously. Fire 5 to 6 shots in the full auto mode and then return to the semi auto operation.



After Operation
Remove the magazine, direct the muzzle into a safe direction then fire the gun in semi-auto mode for a few shots. Set the safety to the safe position. Always disconnect the battery and attach the protective cap whenever you do not operate the air gun.



WARNING
Make sure no dirt gets into the chamber to avoid clogging of bullets. The hopping up operation may be unstable for 200 to 300 rounds after using silicone oil, this is the normal operation for the gun.

! Never use CRC-556, WD40 or other corrosive lubricant.

FIRING

Cautions on Motor and Battery
Charge the battery if the firing cycle becomes slow. Give the air gun a rest for 5 to 10 minutes after firing about 500 rounds, in order to ensure long service lives of the motor and battery.

When Bullets Are Clogged
If bullets are clogged, remove them and apply a few drops of G&G silicone oil into the chamber from the magazine entrance. Apply G&G silicone oil for 0.5 to 1 sec, to obtain smooth continuous firing.



When a problem occasion please check the steps below, other problems please turn to your dealer or contact us.



SYMPTOM

POTENTIAL

CORRECTIVE

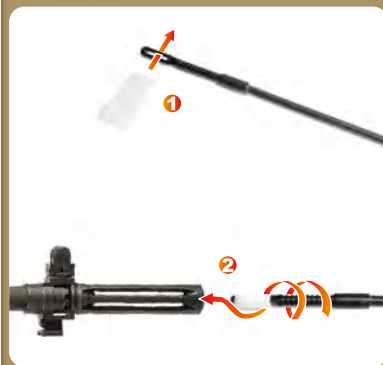
No operation at all	Selector lever is set to safety.	Set the selector lever to Semi or Full Auto.
	Battery is not charged.	Charge the battery.
	Battery connector is disconnected.	Connect the connector.
	The + and - of battery connector is reverse.	Connect the connector correctly(check the fuse)
	Expired motor life (50,000 to 60,000 rounds) or poor electrical connection.	Replace the dead motor (can be purchased from local dealer or directly G&G). Check and repair the contacts.
Although motor is revolving, no pellet can be fired	Pellets are clogged inside the magazine.	Insert the charging rod into the magazine and move up and down a few times to remove clogged pellets.
	Pellets are clogged in the chamber.	Remove clogged pellets using the cleaning rod.
	Faulty gear.	Prurchase the replacement gear from your dealer or G&G and repair.
Impossible full-auto operation(automatic firing)	Insufficient battery power.	Charge the battery.
	Faulty pellet feed of magazine.	Repair clogging of the magazine.
	Poor electrical connection.	Consult your dealer or us for overhaul maintenance or repair.
Shooting distance becomes shorter	Damaged or worn chamber set.	Replace the replacement parts(Purchasing from your dealer or G&G)
	Damaged or worn piston set (O-ring,piston spring)	
	Something is jammed in the inner barrel	Use the cleaning rod and clean the inner barrel.
	Faulty BB pellets (too small or heavy)	Use the genuine G&G Pellets.
	Shrotage of silicone oil	Drops few drops of silicone oil from upper the chamber.
	Gear problem caused by too many blank firing	
Too loud operating noise	Worn or damaged gear	Consult your dealer or G&G for overhaul maintenance, part replacement (gear,etc.) or repair.
	Gear problem caused by too many blank firing	
Pellets being fallen out from barrel end	Damaged or worn chamber set.	
	No hop setting.	Turn the hop adjustment lever toward Hop.
	Faulty BB Pellets (too small or heavy)	Use the G&G Pellets.
If gun gets wet	Stop operation immediately, disconnect the battery, wipe off water from inside the main body and the battery. After completely dry, carry out trial firing. If the unit is not operational, please contact your local dealer for repair.	



CAUTION

Do not jam the cleaning rod into the barrel by force. Should the BB's remains inside the barrel after following the instruction above, with the protection cap over the barrel, point the gun to a safe direction and discharge any loosened BB's in semi-automatic mode.

WHEN PELLET SPEED BECOMES LOW



1.Drop a few drops of silicone oil or Teflon oil from the pellet entrance. After inserting BB pellets into the magazine and fire pellets around to 200 or 300 pellets.

2.To complete the cleaning, use the cleaning rod (with cotton), to remove excess oil.

REMOVING CLOGGED PELLETS



1.Return the hop up dial to the Normal position and insert the cleaning rod from the lead edge of the barrel.

2.To remove clogged BB's, carefully insert the cleaning rod inside the barrel with the flat tip facing down as shown below.

DISCLAIMER

- * Accessories pictured are not always included with product.
- * Adult supervision required for users under 18 years of age.
- * The purchaser and user should conform to all laws governing and ownership of airsoft guns.
- * All products in this manual are imitation firearms and are not intended nor represented to be comparable in design, appearance, or function to any actual firearm offered by other manufacturers.
- * Product names are trademarks of G&G, which has no affiliation to, and is not associated, or sponsored by any manufacturer of actual or imitation firearms. Products may vary form those pictured.

No. Parts Name

- 01 UPPER COVER SET
- 02 DUMMY BOLT PLATE
- 03 UPPER RECEIVER SET
- 04 REAR SIGHT SET
- 05 MAGAZINE
- 06 BUFFER PLATE

No. Parts Name

- 07 FRONT BARREL SET
- 08 HOP-UP SET
- 09 STOCK RELEASE BUTTON
- 10 RECOIL SPRING SET
- 11 GRIP SET
- 12 STOCK SET

No. Parts Name

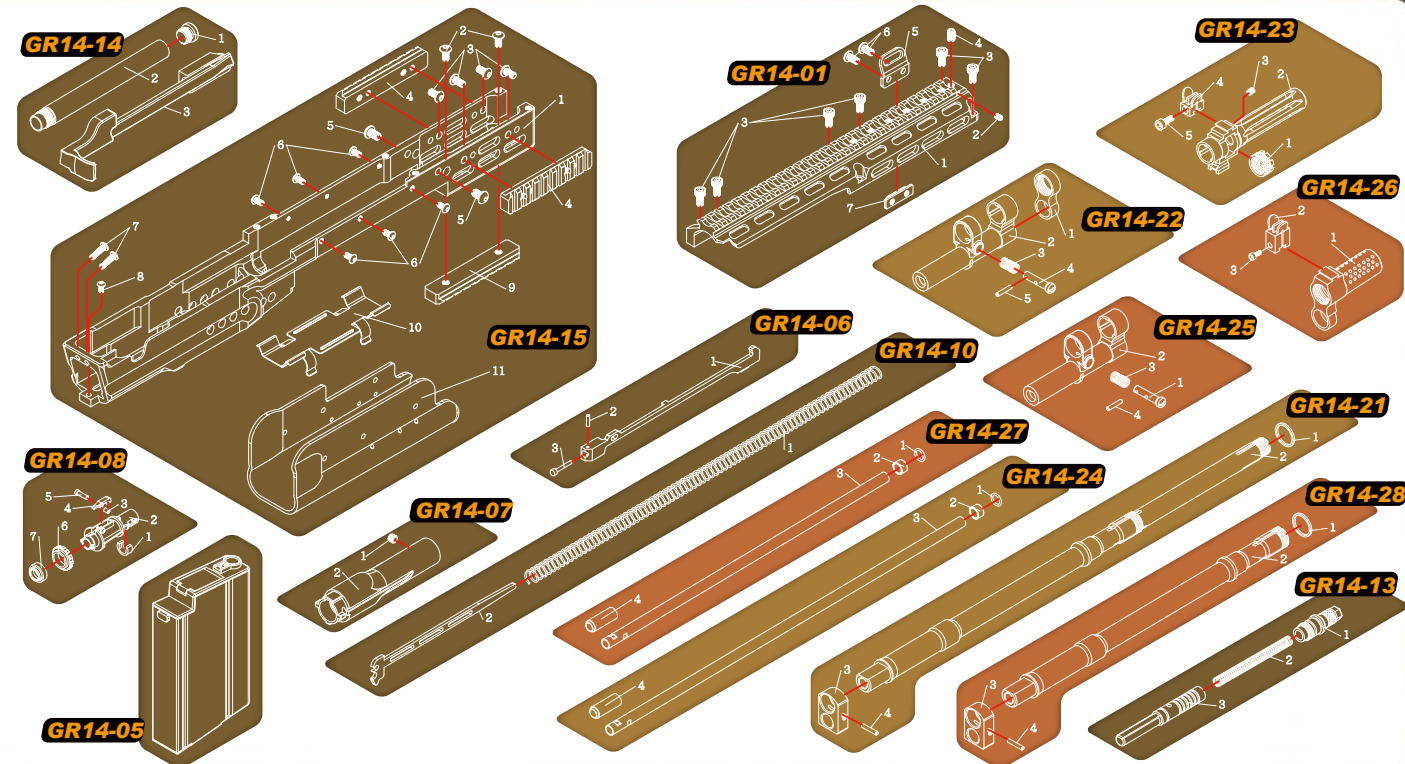
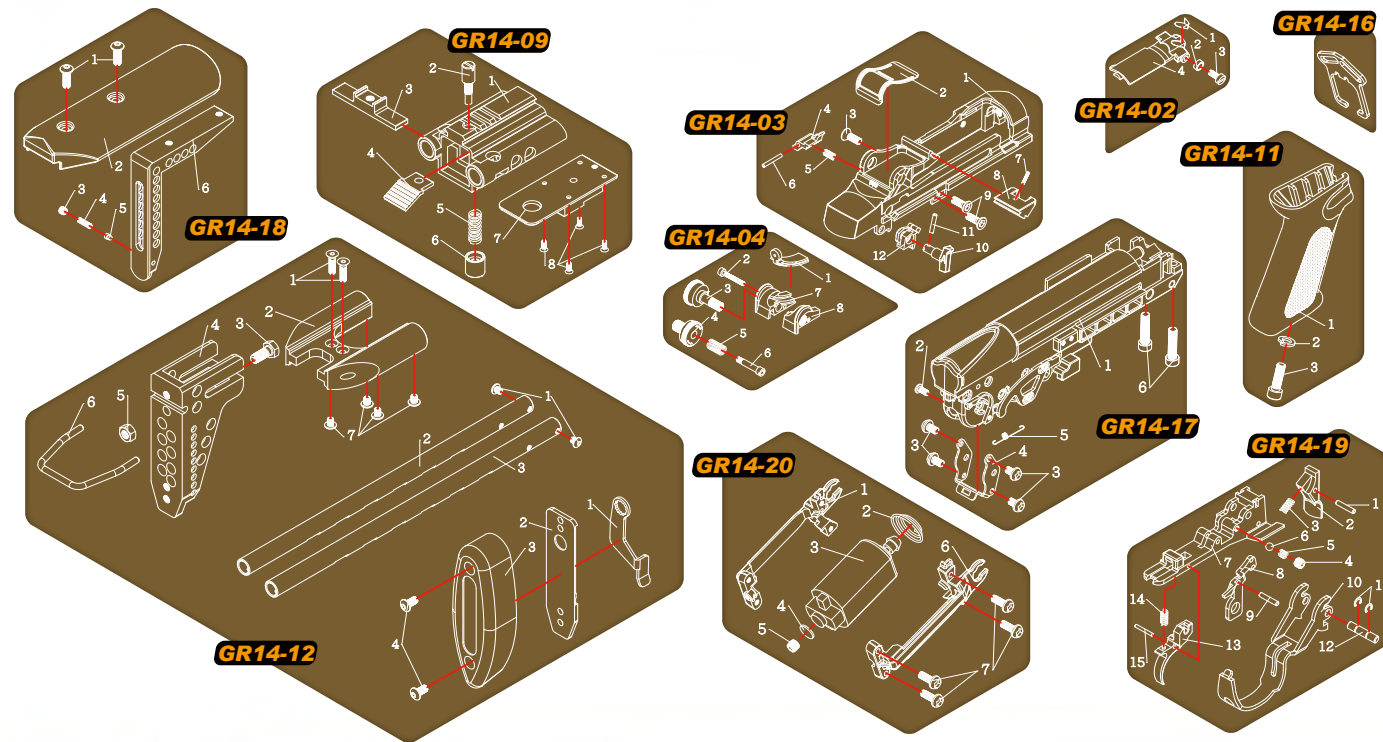
- 13 GAS CYLINDER PISTON
- 14 BOLT HANDLE SET
- 15 LOWER RECEIVER SET
- 16 SLING ATTACHMENT
- 17 GEAR BOX SET
- 18 CHEEK REST SET

No. Parts Name

- 19 TRIGGER GUARD SET
- 20 MOTOR SET
- 21 OUTER BARREL SET (EBR LONG)
- 22 GAS CYLINDER SET (EBR LONG)
- 23 FLASH SUPPRESSOR (EBR LONG)
- 24 INNER BARREL (EBR LONG)

No. Parts Name

- 25 GAS CYLINDER SET (EBR SHORT)
- 26 FLASH SUPPRESSOR (EBR SHORT)
- 27 INNER BARREL (EBR SHORT)
- 28 OUTER BARREL SET (EBR SHORT)



GR14 SERIES

6mm Electric Semi / Full Auto System

Instruction Manual

PARTS LIST for GR14 Series (except EBR, SOC16)

No. Parts Name

- 01 UPPER COVER SET
- 02 DUMMY BOLT PLATE
- 03 UPPER RECEIVER SET
- 04 REAR SIGHT SET
- 05 MAGAZINE
- 06 BUFFER PLATE

No. Parts Name

- 07 FRONT BARREL SET
- 08 HOP-UP SET
- 10 RECOIL SPRING SET
- 13 GAS CYLINDER PISTON
- 14 BOLT HANDLE SET
- 15 LOWER RECEIVER SET

No. Parts Name

- 17 GEAR BOX SET
- 19 TRIGGER GUARD SET
- 20 MOTOR SET
- 22 GAS CYLINDER SET
- 23 FLASH SUPPRESSOR
- 24 INNER BARREL

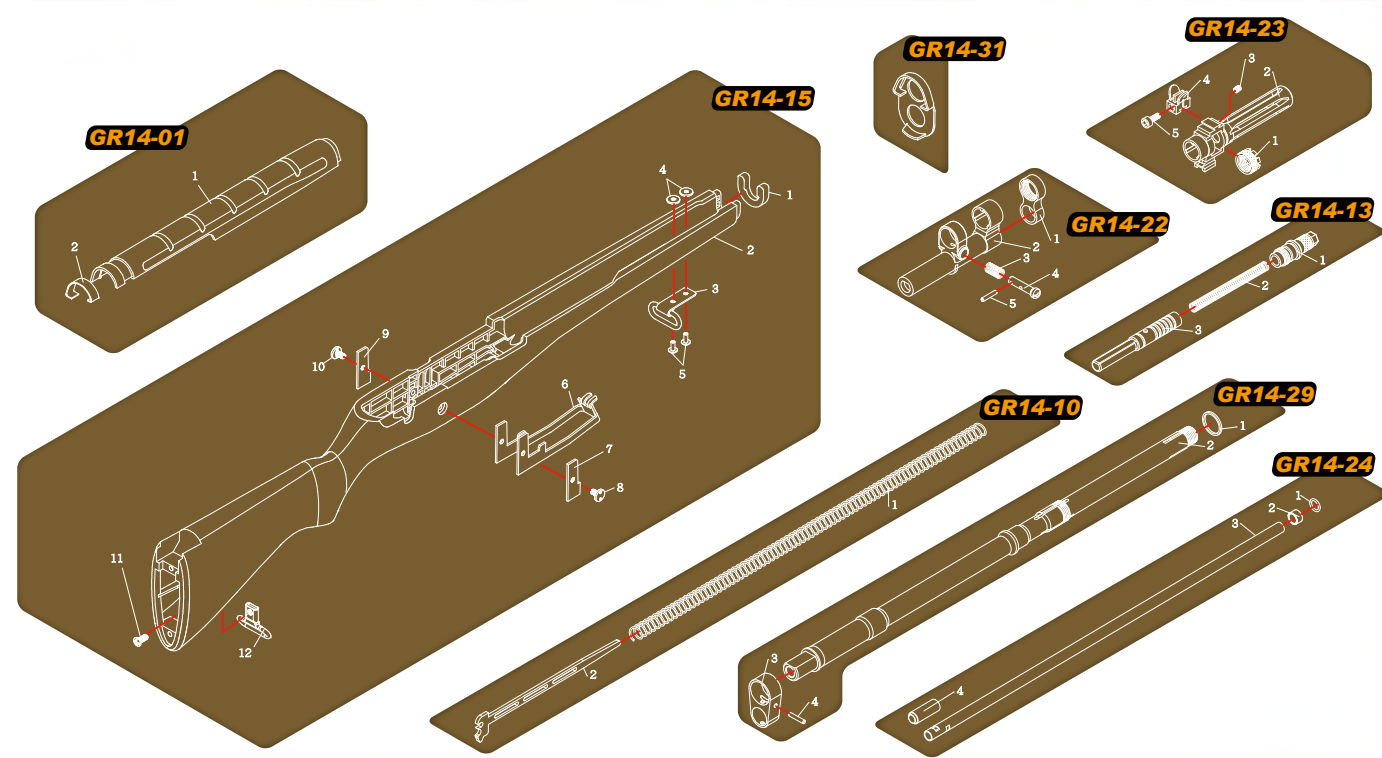
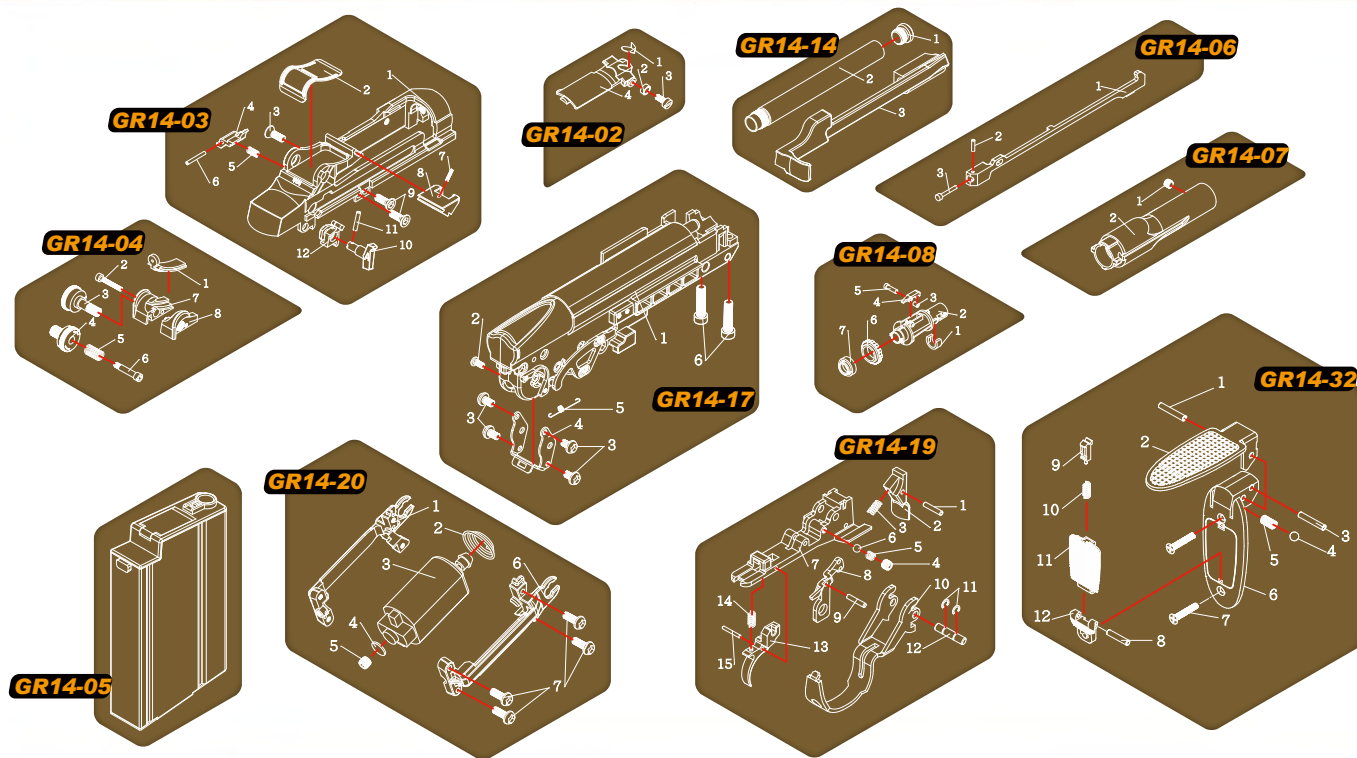
No. Parts Name

- 29 OUTER BARREL SET
- 31 FRONT BAND
- 32 STOCK PLATE SET

WWW.GUAY2.COM



G&G ARMAMENT
AIRSOFT GUNS & ACCESSORIES



WWW.GUAY2.COM

GR14 SERIES

6mm Electric Semi / Full Auto System

Instruction Manual

PARTS LIST for SOC 16

No. Parts Name

- 01 UPPER COVER SET
- 02 DUMMY BOLT PLATE
- 03 UPPER RECEIVER SET
- 04 REAR SIGHT SET
- 05 MAGAZINE
- 06 BUFFER PLATE

No. Parts Name

- 07 FRONT BARREL SET
- 08 HOP-UP SET
- 10 RECOIL SPRING SET
- 13 GAS CYLINDER PISTON
- 14 BOLT HANDLE SET
- 15 LOWER RECEIVER SET

No. Parts Name

- 17 GEAR BOX SET
- 19 TRIGGER GUARD SET
- 20 MOTOR SET
- 25 GAS CYLINDER SET
- 26 FLASH SUPPRESSOR
- 27 INNER BARREL

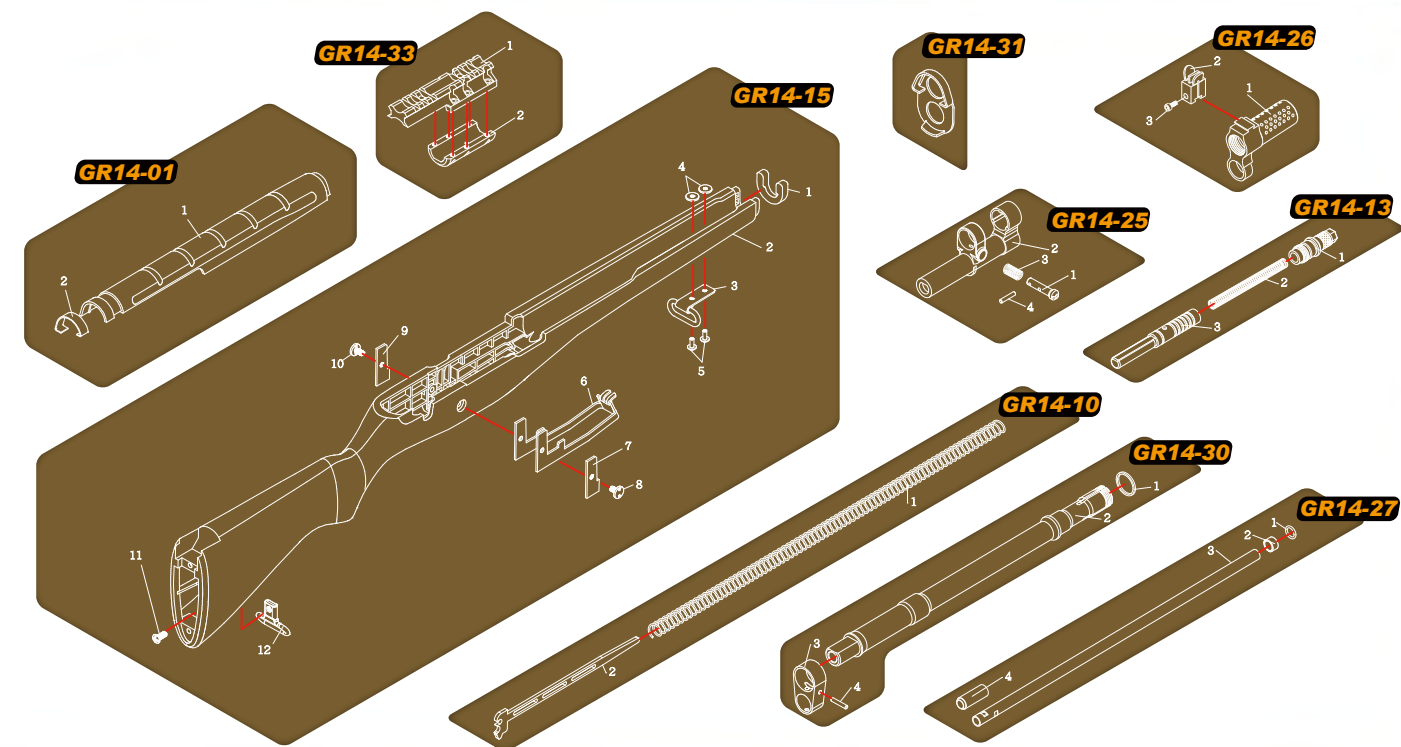
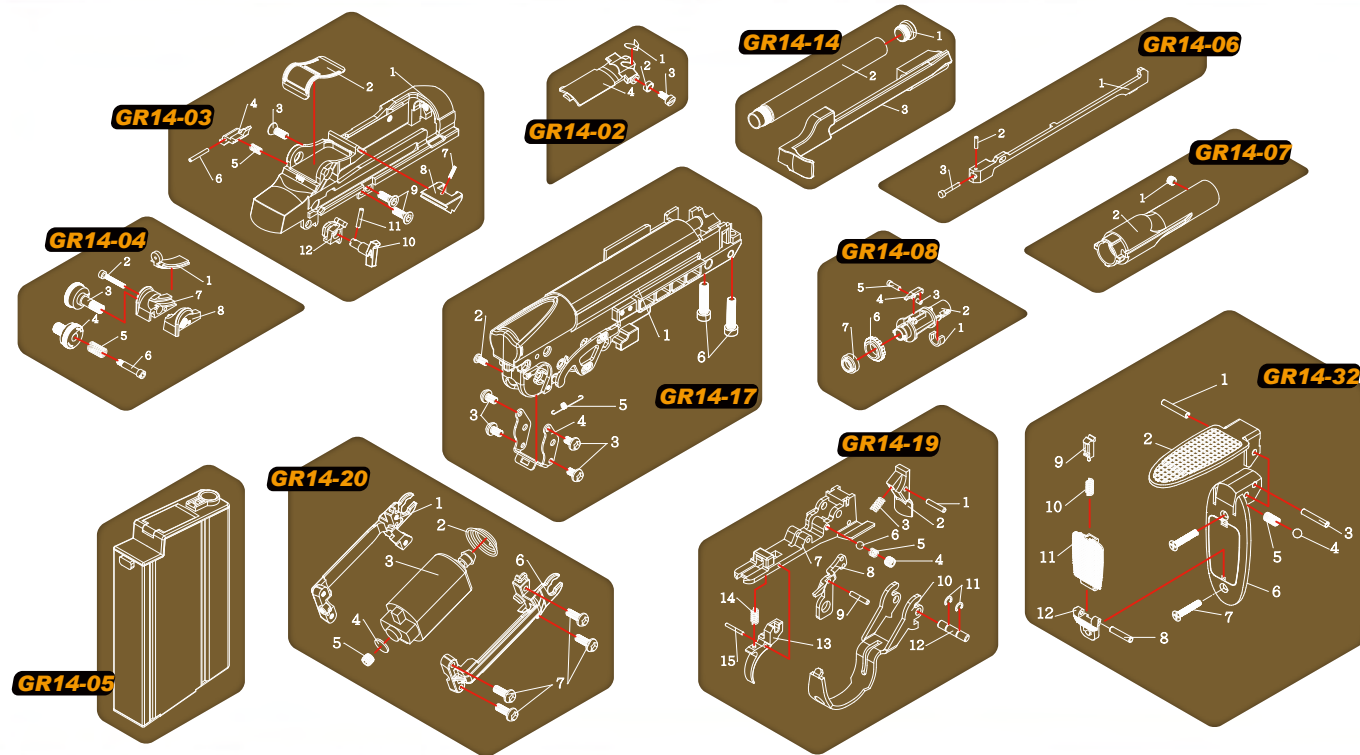
No. Parts Name

- 30 OUTER BARREL SET
- 31 FRONT BAND
- 32 STOCK PLATE SET
- 33 RAIL SET

WWW.GUAY2.COM



G&G ARMAMENT
AIRSOFT GUNS & ACCESSORIES



WWW.GUAY2.COM